



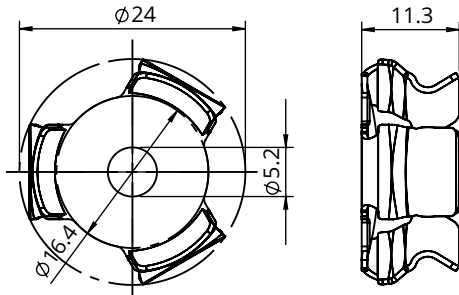
CONCEALED QUICK ASSEMBLY AND RELEASE FASTENER SYSTEM

FAST-CON®

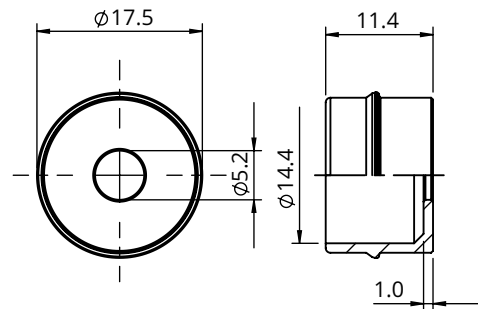
FAST-CON® is the new and revolutionary stainless steel 2 part concealed quick assembly snap on / pull off fastening system for panelling and cladding.

Assembly: Attach the female part to the structure and the male part to the panel by screwing, gluing or riveting.

FEMALE PART



MALE PART



PART NUMBER	MATERIAL	RELEASE FORCE
FC-01-FE.51	316 Stainless Steel	min. 7kg
FC-01-FE.53	301 Stainless Steel	min. 10kg

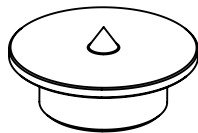
PART NUMBER	MATERIAL
FC-01-MA.51	316 Stainless Steel
FC-01-MA.50	303 Stainless Steel

The values and dimensions are indicative and not binding - dimensions expressed in mm.

Standard Item

Special Order

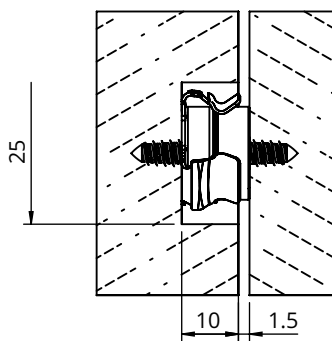
Stainless steel centre marking device
Part number FC-01-CE.50



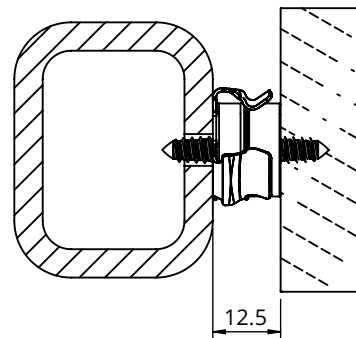
Panel release lever
Part number FC-00-LE.12



Application example:
recessed FAST-CON®



Application example:
surface mounted FAST-CON®



FAST-CON® is a registered trademark of SPECIALINSERT Srl.

For further information visit: www.npfasteners.com/fast-con

[tinyurl.com/NP-FAST-CON](https://www.youtube.com/watch?v=tinyurl.com/NP-FAST-CON)

NORTHERN PRECISION LIMITED Unit 3 Durham Lane, Armthorpe, Doncaster, South Yorkshire DN3 3FE
Tel: +44 (0)1302 836010 email: sales@npfasteners.com